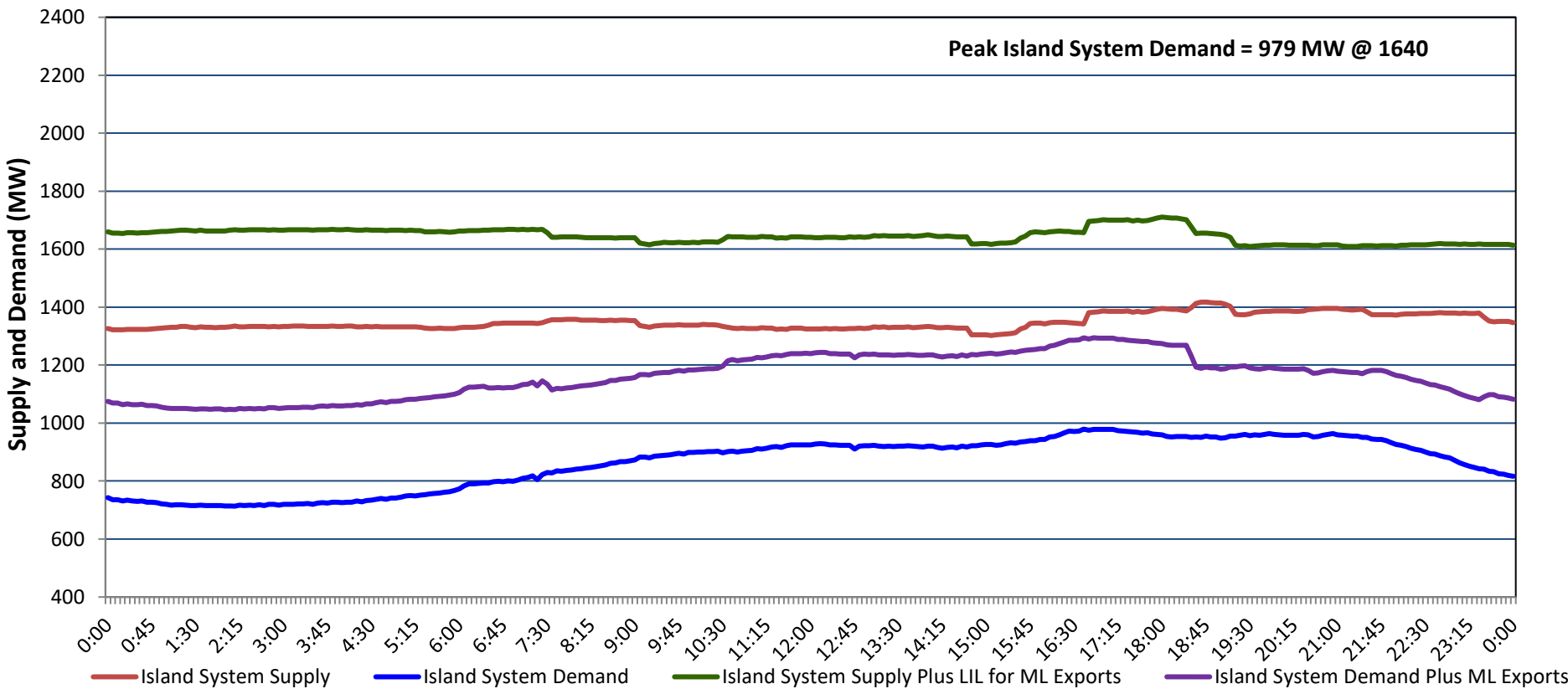


Newfoundland Labrador Hydro (NLH)
Supply and Demand Status Report Filed Tuesday, May 20, 2025

Section 1
Island Interconnected System - Supply, Demand & Exports
Actual 24 Hour System Performance For Monday, May 19, 2025



Island Supply Notes For May 19, 2025

- A As of 0816 hours, March 26, 2025, St. Anthony Diesel Plant available at 8.85 MW due to forced derating (9.7 MW).
B As of 0800 hours, March 30, 2025, Holyrood Unit 3 unavailable due to planned outage 130 MW (150 MW).
C As of 0823 hours, March 31, 2025, Bay d'Espoir Unit 1 unavailable due to planned outage (76.5 MW).
D As of 0823 hours, March 31, 2025, Bay d'Espoir Unit 2 unavailable due to planned outage (76.5 MW).
E As of 1543 hours, May 03, 2025, Holyrood Unit 2 available but not operating 115 MW (170 MW).
F As of 0800 hours, May 04, 2025, Holyrood Unit 1 unavailable due to planned outage (170 MW).
G As of 0851 hours, May 05, 2025, Hardwoods Gas Turbine unavailable due to planned outage (50 MW).
H As of 1538 hours, May 16, 2025, Holyrood Diesels available at 8 MW due to forced derating (10 MW).

Section 2
Island Interconnected System - Supply, Demand & Outlook

Tue, May 20, 2025	Island System Outlook ²	Seven-Day Forecast	Island System Daily Peak Demand (MW)	
			Forecast ⁸	Adjusted ⁶
Island System Supply: ⁴ NLH Island Generation: ^{3,7} NLH Island Power Purchases: ⁵ NP and CBPP Owned Generation: LIL/ML Net Imports to Island: ⁹	1,517 MW 995 MW 95 MW 210 MW 217 MW	Tuesday, May 20, 2025	1,055	1,005
		Wednesday, May 21, 2025	1,060	1,010
		Thursday, May 22, 2025	1,090	1,040
		Friday, May 23, 2025	1,080	1,030
		Saturday, May 24, 2025	1,005	955
		Sunday, May 25, 2025	955	905
		Monday, May 26, 2025	995	945
7-Day Island Peak Demand Forecast:	1,090 MW			

Island Supply Notes For May 20, 2025

- Notes: 1. Generation outages for running and corrective maintenance are included. These are not unusual for power system operations. They generally do not impact customer supply. Hydro schedules outages to system equipment whenever possible to coincide with periods when customer demands are low and sufficient supply reserves are available. However, from time to time equipment outages are necessary and reserves may be impacted.
2. As of 0800 Hours.
3. Gross continuous unit output.
4. Gross output from all Island sources (including Note 3).
5. NLH Island Power Purchases include: ML Imports, Exploits Generation, Rattle Brook, Star Lake, Wind Generation and capacity assistance (when applicable).
6. Adjusted for interruptible load and the impact of voltage reduction when applicable.
7. Due to limitations inherent in the design of combustion turbines, the output of combustion turbines may be reduced in the event that ambient temperatures exceed the threshold required for full rated output. This threshold is dependent on the design of each turbine.
8. Does not include ML Exports.
9. LIL Import sunk in the Island System. Actual LIL flows will be restricted by various system conditions including, but not limited to, Island Load, ML Exports and Avalon Unit status.

Section 3
Island Peak Demand and Exports Information
Previous Day Actual Peak and Current Day Forecast Peak

Mon, May 19, 2025	Island Peak Demand ¹⁰	16:40	979 MW
	Exports at Peak		315 MW
	LIL Net Imports to Island		1,340 MWh
Tue, May 20, 2025	Forecast Island Peak Demand		1,055 MW

- Notes: 10. Island Demand is supplied by NLH generation and purchases, LIL Imports plus generation owned and operated by Newfoundland Power and Corner Brook Pulp & Paper (Deer Lake Power, DLP).